



GRAÇA MACHEL TRUST

# PREVENTION OF SEXUAL EXPLOITATION AND ABUSE (PSEA)

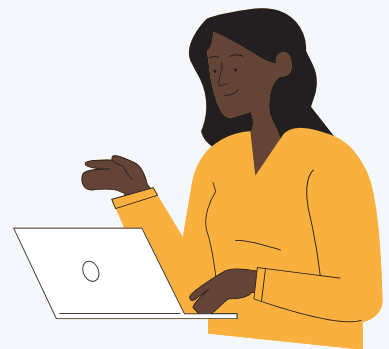


## What you should know about PSEA

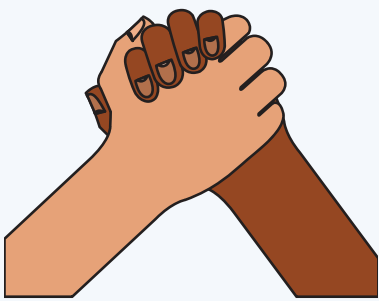
PSEA Policy sets out the Trust's commitment to the prevention and management of sexual exploitation and abuse and reporting mechanisms. We are committed to instilling a nurturing culture that promotes safety and human dignity and embracing a zero-tolerance approach to exploitative and abusive behaviours and relationships.

## Who it applies to:

This Policy applies to Graça Machel Trust representatives: Trustees, Management and Staff, Network members, service providers, contractors, consultants, interns, volunteers, and/or any other persons acting on behalf of the Trust.



## Ensure that your conduct:



- Respects and never violates the rights of vulnerable people,
- Does not give rise to suspicion of improper motives,
- Is professional, ethical and in line with the Trust's Code of Conduct, and
- Is never influenced by personal gain or advantage that results in risk or detriment to the Trust.

## Every person under GMT representatives **MUST** comply with the following prohibitions:

- Must refrain from sexual activity with any person under 18 regardless of the local age of consent (national laws). Ignorance or mistaken belief of a child's age is not a defense. Failure to report such a relationship may lead to disciplinary action.
- Exchange of money, employment, goods, or services for sex, including sexual favours or other forms of humiliating, degrading or exploitative behaviour is strictly prohibited. This includes the exchange of assistance to beneficiaries and programme participants in the work of the Trust.
- Must not request any service or sexual favours from clients or participants of the Trust's programmes, children, or others in the communities where the Trust works in return for protection or assistance and will not engage in sexually exploitative relationships.

**NOTE: FAILURE TO RESPOND OR REPORT MISCONDUCT BREACHES THE GMT STANDARDS OF CONDUCT AND WILL LEAD TO DISCIPLINARY ACTION.**

## How to Report

Anyone has the right to make a report about the behaviour of Graça Machel Trust representatives in line with our Code of Conduct and Whistle-blower Policy. Those who suspect inappropriate behaviour can report their concerns through this email: [ethics@gracamacheltrust.org](mailto:ethics@gracamacheltrust.org)



**[Download the GMT Prevention of Sexual Exploitation and Abuse Policy.](#)**